

# SMB Connector

SMB connectors are designed with a snap on connection and are always suitable to connect RF circuits of electronic equipment. With small size, they are characterized by excellent performances of rapid and reliable connection in small spaces.

## ◆ Features

Interface and quality tested according to IEC 60169-10.

Frequency range up to 4GHz

VSWR(straight connector):  $\leq 1.30$  typ.

Snap-on coupling mechanism

Rapid connection in limited spaces

High packing density.

## ◆ Applications

Cable connectors (straight and right angle) for flexible, semi-flex and semi-rigid cables with diameters to 3.1mm

PCB connectors (straight and right angle)

Panel connectors in various flanges

Terminations

Adaptors

## Specifications

### Electrical Characteristics

Impedance	50 $\Omega$
Frequency range	0~4GHz
VSWR	$\leq 1.30$ typ
Insulation resistance	$\geq 5000M\Omega$
Center contact resistance	$\leq 5.0m\Omega$
Outer contact resistance	$\leq 2.5m\Omega$
Withstand voltage	750 V rms
Working voltage	250V
RF-leakage(dB)	$\geq 55dB@1GHz$

### Mechanical Characteristics

Coupling torque	/
Coupling nut retention	8N~63N
Center contact captivation	10N
Center contact retention force	$\geq 0.28N$
Mating cycles	$\geq 500$



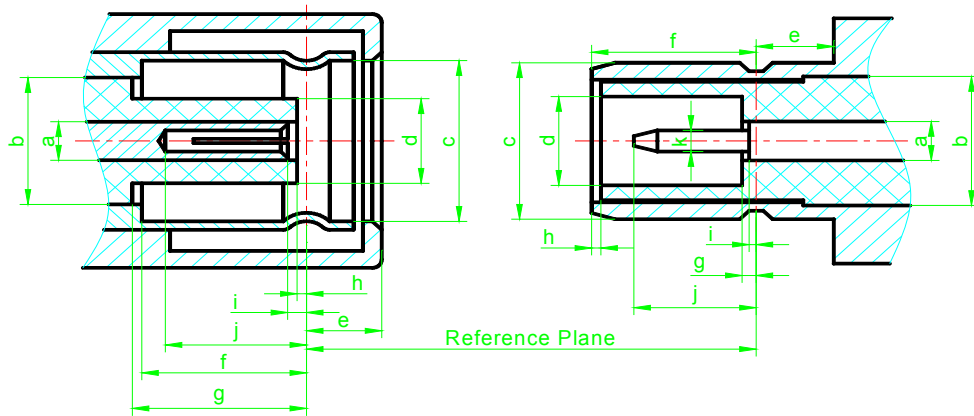
**Specialized Manufacturer of RF connector & Cable assemblies**

TEL:+86-519-88795138 FAX:+86-519-88522108 [www.xinsheng-elec.com](http://www.xinsheng-elec.com) sales@xinsheng-elec.com

Environmental Data	
Temperature range	-55°C~+155°C
Moisture resistance	IEC 61169-1,Subclause9.4.3
Rapid change of temperature	IEC 61169-1,Subclause9.4.4
Vibration	IEC 61169-1,Subclause9.3.3
Shock	IEC 61169-1,Subclause9.3.14
Corrosion resistance	IEC 61169-1,Subclause9.4.6

Materials	
Body	CuZn/ Au plating
Outer contact	CuZN/CuBe/ Au plating
Center contact	CuZn/CuBe/ Au plating
Insulator	PTFE

## Interface Dimensions



SMB(50hm) Series				
Code	Male (Jack)		Female (Plug)	
	Min	Max	Min	Max
A	0.95nom		0.95nom	
B	3.05nom		3.05nom	
C			3.66	3.71
D		2.06	2.08	
E		1.63	1.65	
F	3.58		3.33	3.58
G	3.58			-0.18
H	0.18		0	
I	0.18	0.94		0.18
J	2.97			2.97
K			0.48	0.53

1) Contact diameters refer to 50 Ohm.

2) Resilient, dim. to meet electrical and mechanical requirements

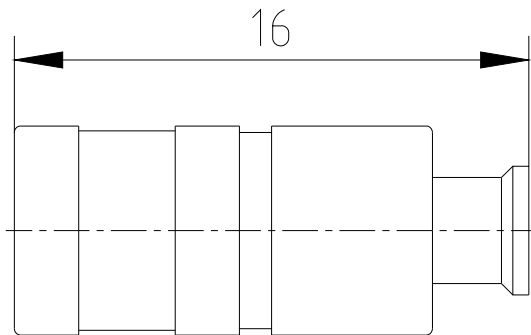
3) All dimensions are in mm, tolerance according to ISO2768 m-H.



**Specialized Manufacturer of RF connector & Cable assemblies**

TEL:+86-519-88795138 FAX:+86-519-88522108 [www.xinsheng-elec.com](http://www.xinsheng-elec.com) sales@xinsheng-elec.com

## Cable Connectors



### SMB-KB2

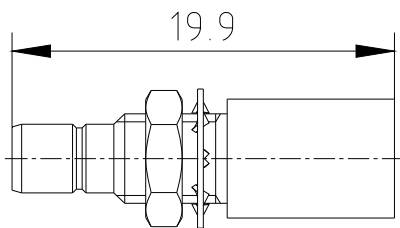
Part No: 5080008

Inner conductor Beryllium Copper (Gold-Plating)

Outer conductor Brass(Gold-Plating)

Insulator PTFE

## Microstrip Connector



### SMB-JYWHD-01

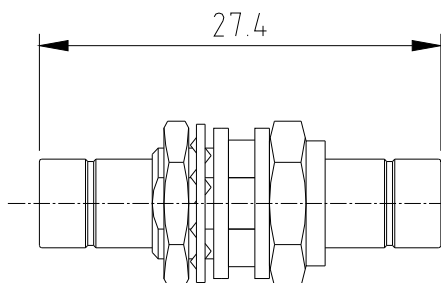
Part No: 5080011

Inner conductor Phosphor Bronze(Gold-Plating)

Outer conductor Brass(Gold-Plating)

Insulator PTFE

## Adapters



### RS-SMB-75JJY

Part No: 5080001

Inner conductor Brass(Gold-Plating)

Outer conductor Brass(Gold-Plating)

Insulator PTFE